

# WORKPLACES and RADON

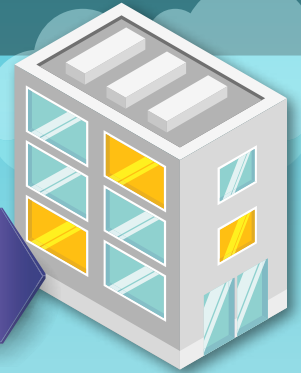
## Got your radon test results?

### WHAT'S NEXT ?

**REDUCING RADON** in buildings can be done efficiently through use of an Active Soil Depressurization system or adjustment of ventilation.

Contact a Canadian National Radon Proficiency Program (C-NRPP) Professional for help.

[www.c-nrpp.ca/find-a-professional](http://www.c-nrpp.ca/find-a-professional)



LEVELS ARE  
**BELOW 200 Bq/m<sup>3</sup>**



LEVELS ARE  
**ABOVE 200 Bq/m<sup>3</sup>**

**STEP 1:** Determine how to communicate the test results. Remind employees that your workplace has tested for radon. Inform them that radon levels are below the guideline which is great for employee health.

**THIS IS SOMETHING TO CELEBRATE WITH ALL STAFF!**

**STEP 2:** Encourage staff to test their own homes.

**STEP 1:** Check with a C-NRPP Professional to determine what steps should be taken to reduce radon exposure.

**STEP 2:** Form a strategy with your Health and Safety committee or office manager on the most effective way to disseminate the information to your staff based on your company's unique culture, structure and policies.

Be prepared for questions and have good resources that you can provide or use for providing timely accurate responses for your employees.

Reassure employees that the high radon levels will be reduced and that you are working with a professional who will be fixing it.

*Establishing a good communication strategy prior to testing is an important step, so that when you let your employees know that results are high, it will come as much less of a surprise.*

## FAQ's

Here are some common questions you may receive during the testing process:

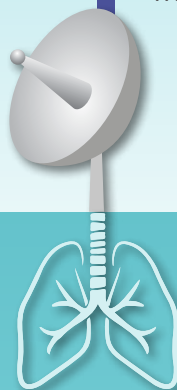
### **IS THERE A MEDICAL/HEALTH TEST THAT CAN BE DONE FOR THOSE EXPOSED TO RADON?**

Although there is research ongoing to address this, currently the information about past radon exposure should be discussed with an employee's health professional, especially if they are seeing symptoms similar to those of lung cancer.

### **RADON IN AIR... WHAT ABOUT RADON IN WATER?**

A building should first be tested for radon in the air. Afterwards, a quick analysis should be done to consider if there is also a risk from radon in water. Here are things to consider:

- **IS A LARGE AMOUNT OF WATER BEING AERATED DURING WORK ACTIVITIES?**
- **HAVE OTHER WATER SURVEYS IN THE AREA FOUND HIGH LEVELS OF RADON IN WATER?**



Smokers who live and work in an environment with high levels of radon are at a greater risk for developing lung cancer.

Now that you have tested your workplace, encourage your employees to test their own homes. Inform them that any building can have radon in it. Consider creating a program in your workplace to encourage employees to take action and test their homes.

When testing a workplace for radon, it is always helpful if employees are aware of the testing right from the beginning through a communication plan. An understanding by all parties that testing will occur will help to make your testing program more successful and not surprise anyone with test results when they come in. The following provides guidance on sharing radon test information to employees who have played a role in your communication plan. Further information on how to create a communication plan can be found at this link...